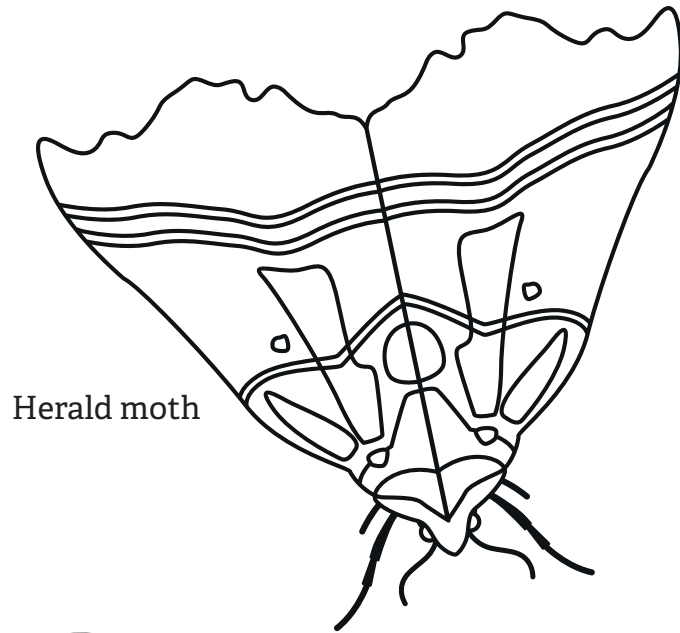




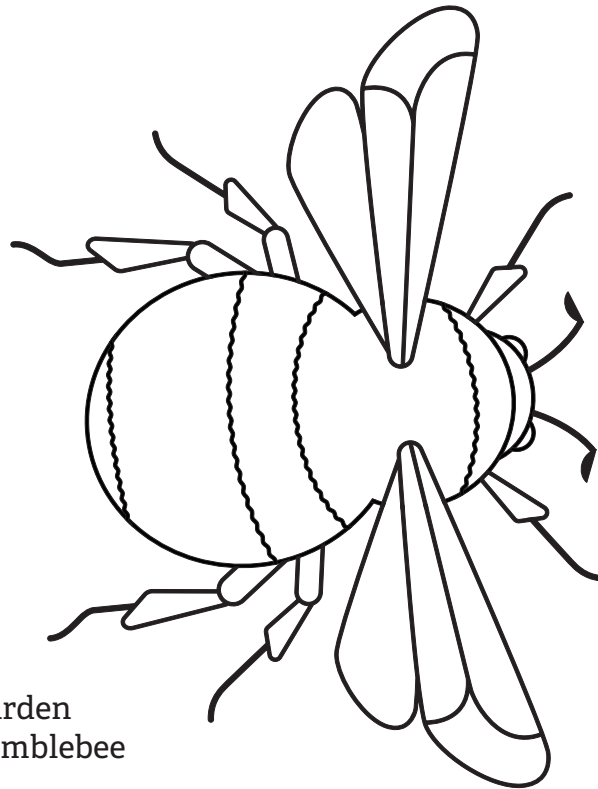
**Yorkshire**  
Wildlife Trust

# Wildlife Treasure Hunt

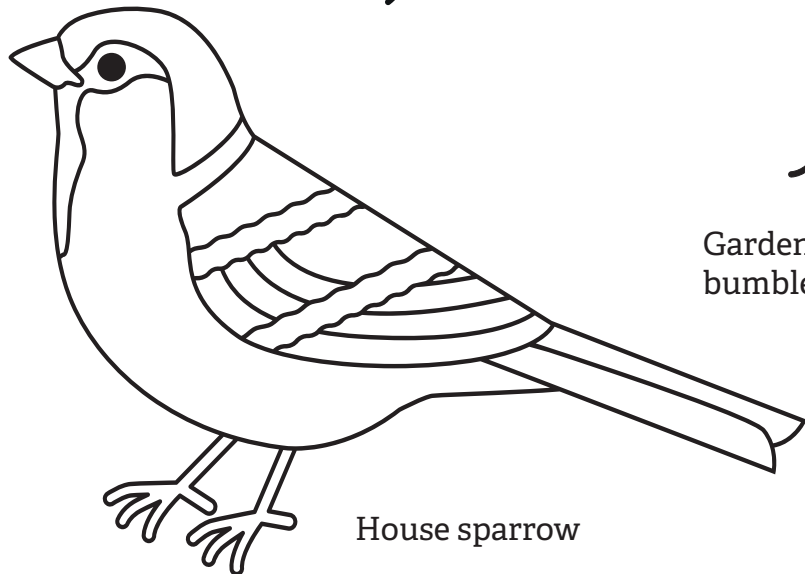
cut outs



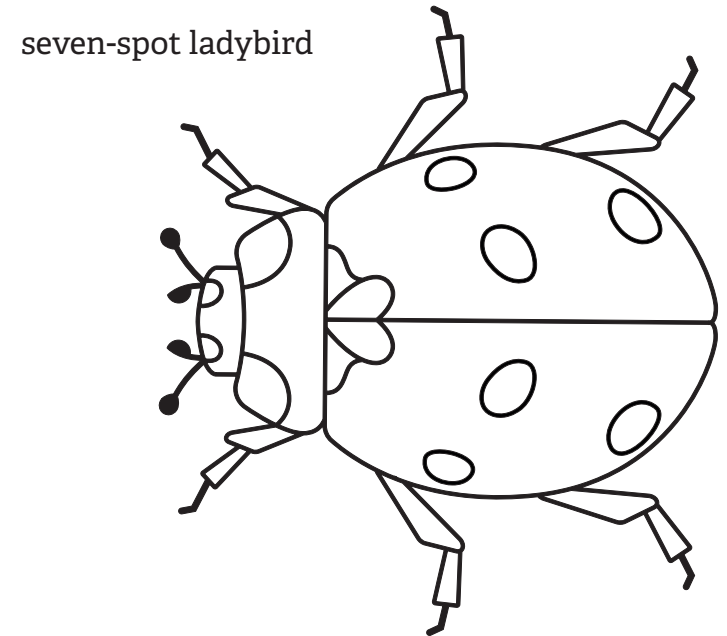
Herald moth



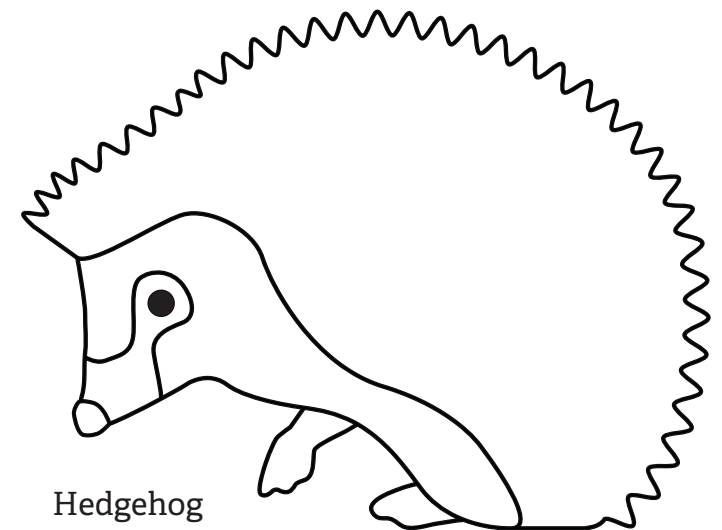
Garden  
bumblebee



House sparrow



seven-spot ladybird



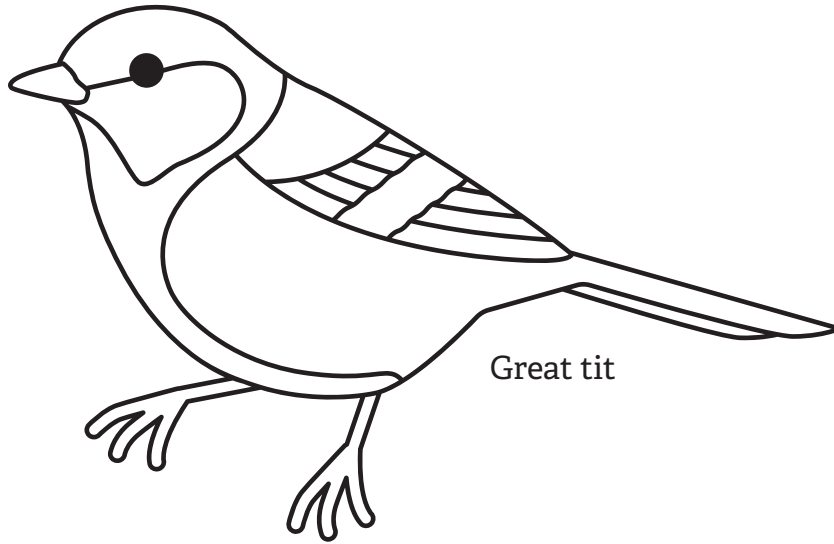
Hedgehog



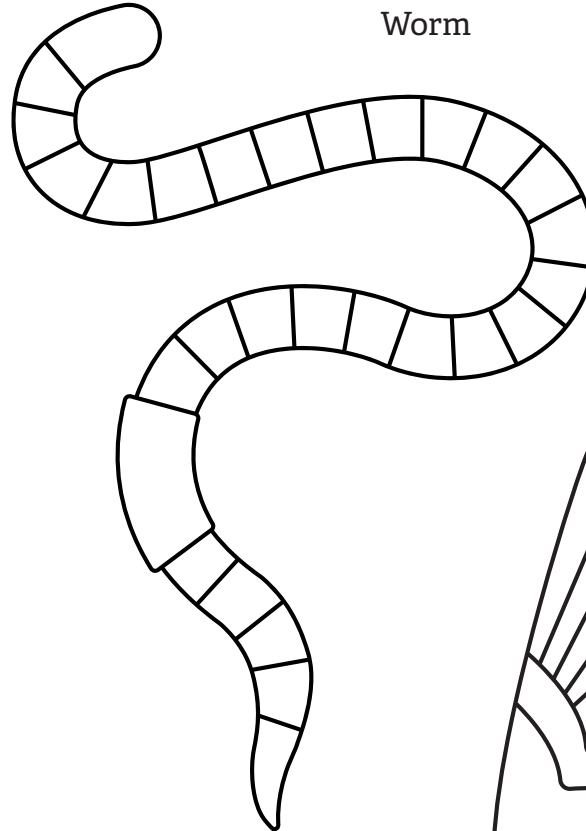
**Yorkshire**  
Wildlife Trust

# Wildlife Treasure Hunt

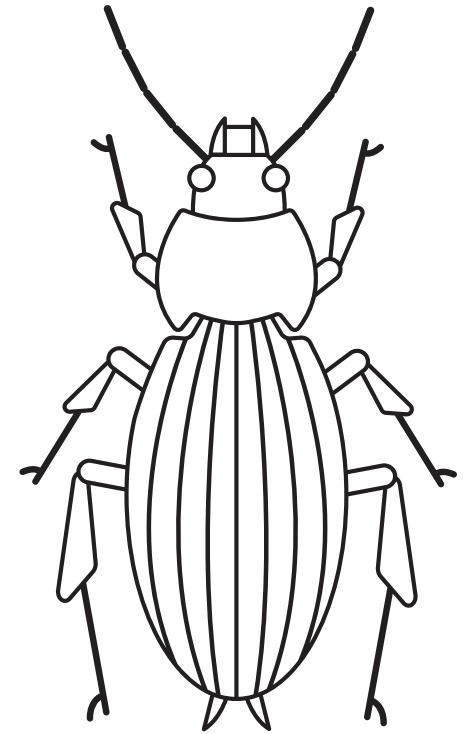
cut outs



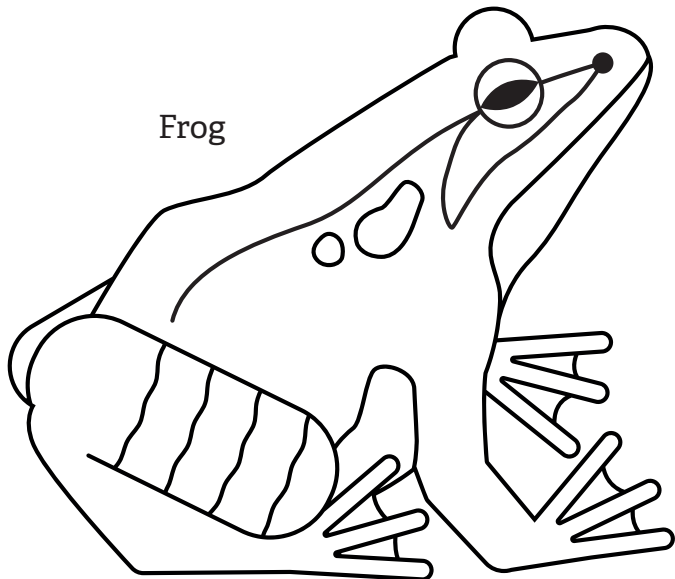
Great tit



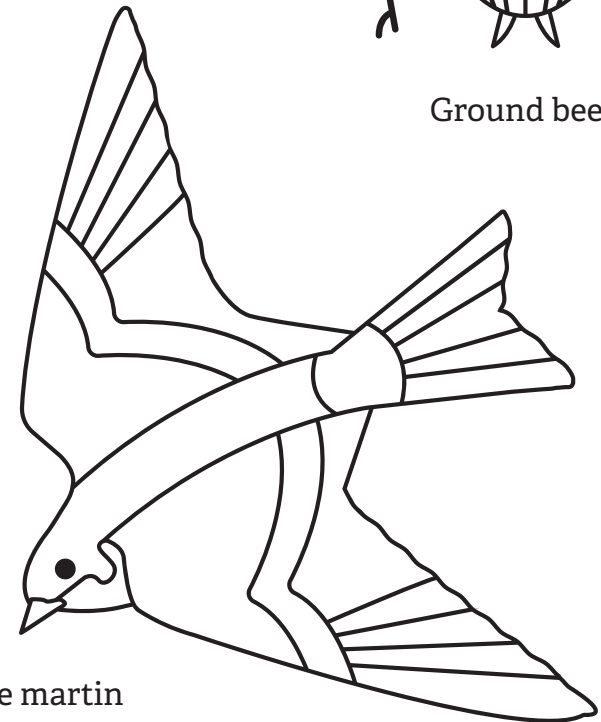
Worm



Ground beetle



Frog



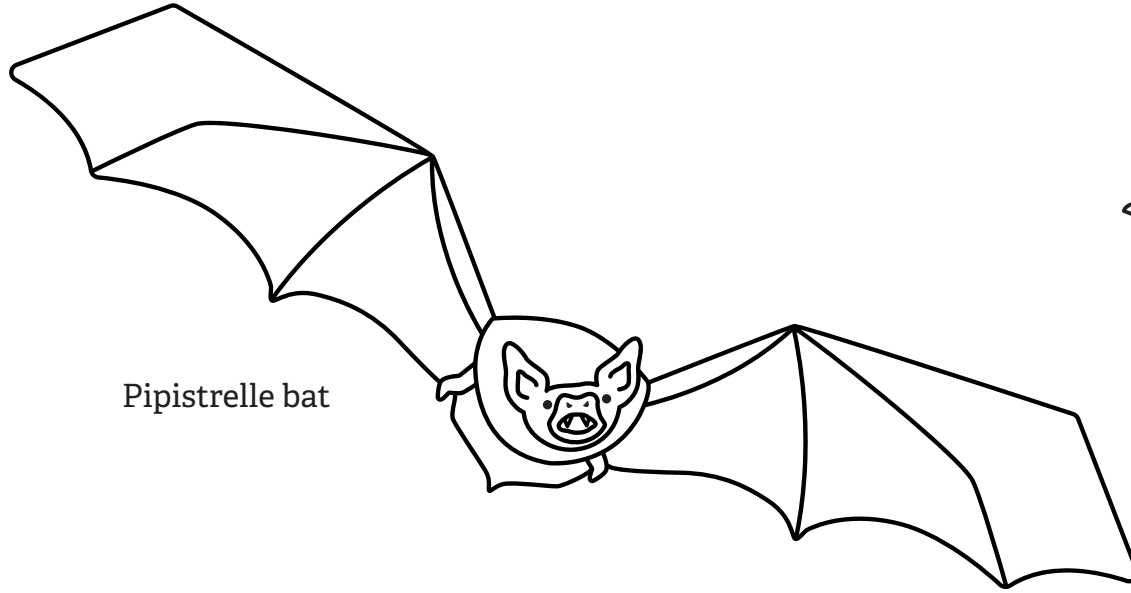
House martin



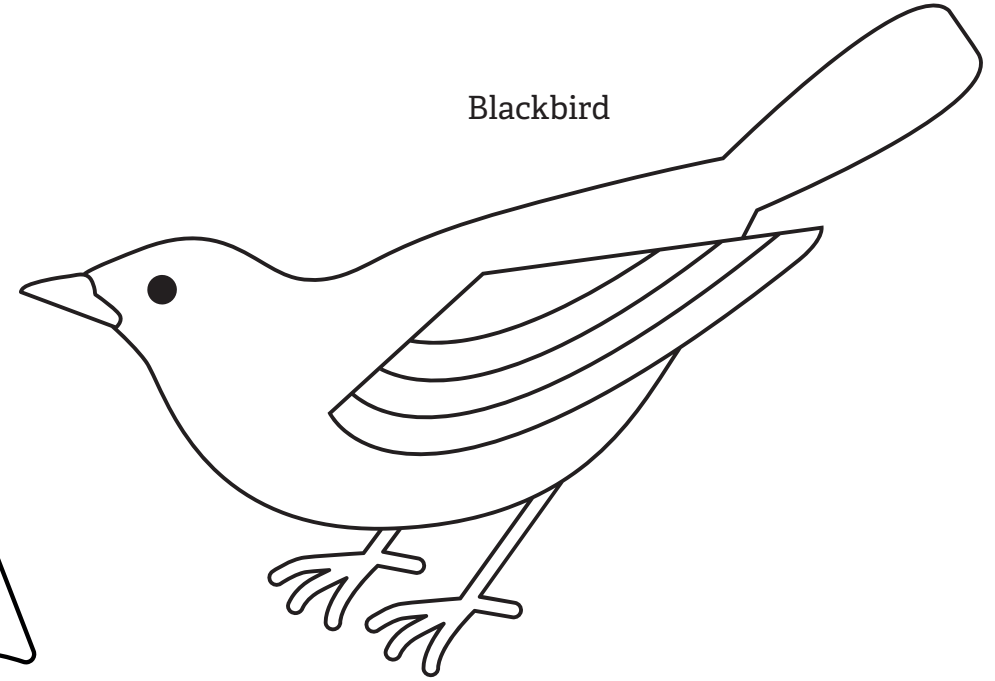
**Yorkshire**  
Wildlife Trust

# Wildlife Treasure Hunt

cut outs



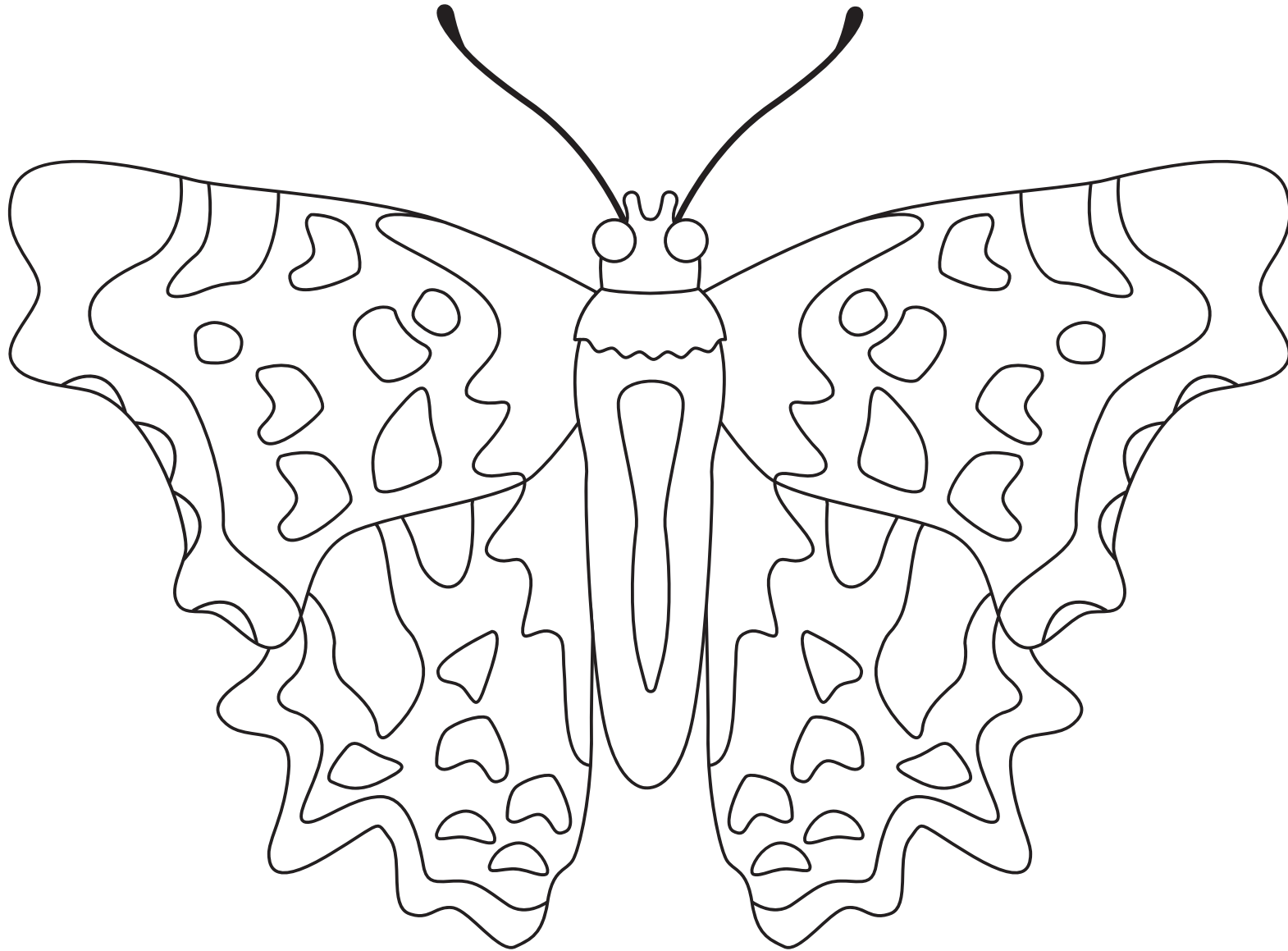
Pipistrelle bat



Blackbird



**Yorkshire**  
Wildlife Trust

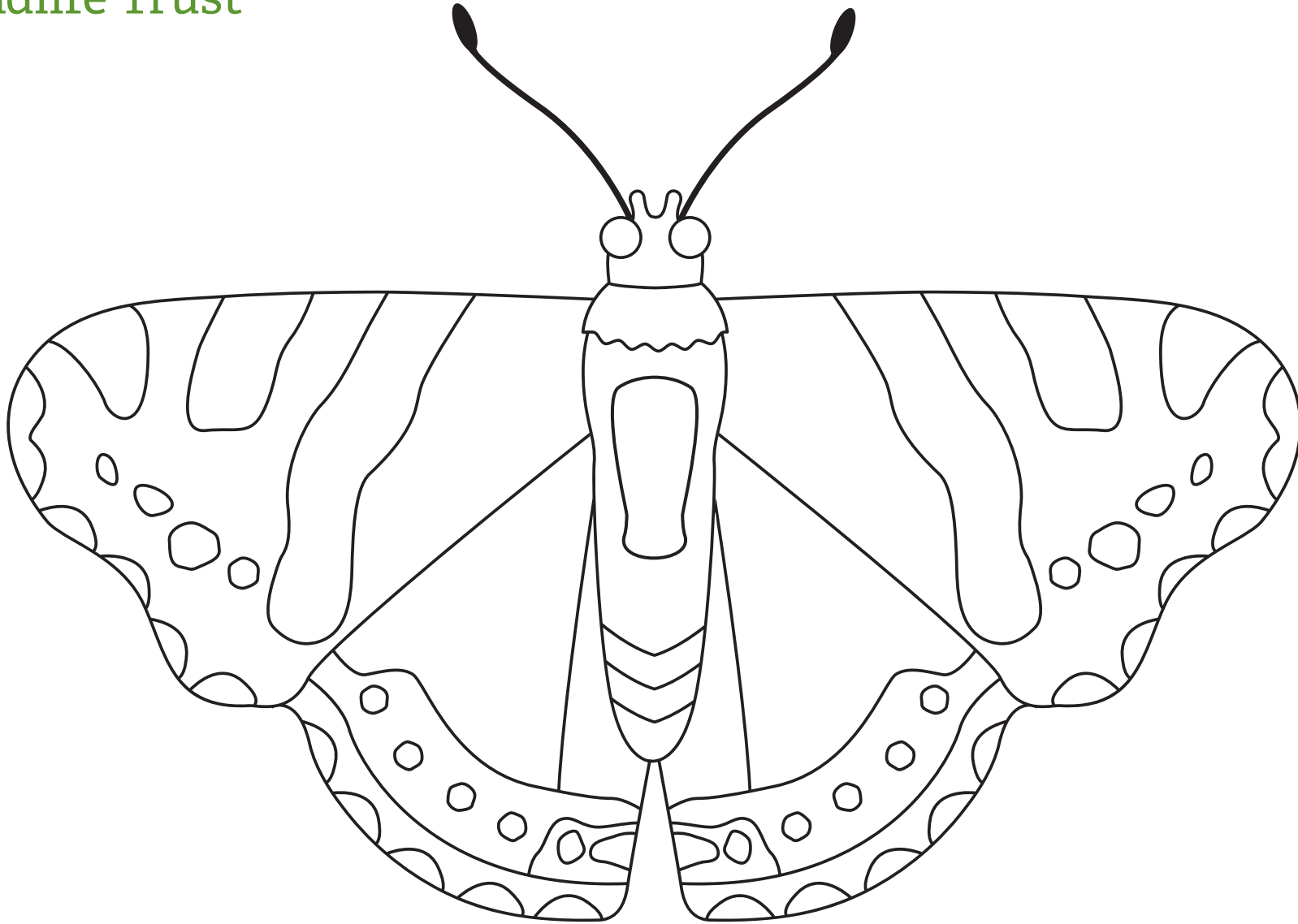


**Comma** Butterfly by .....

[ywt.org.uk](http://ywt.org.uk)



**Yorkshire**  
Wildlife Trust

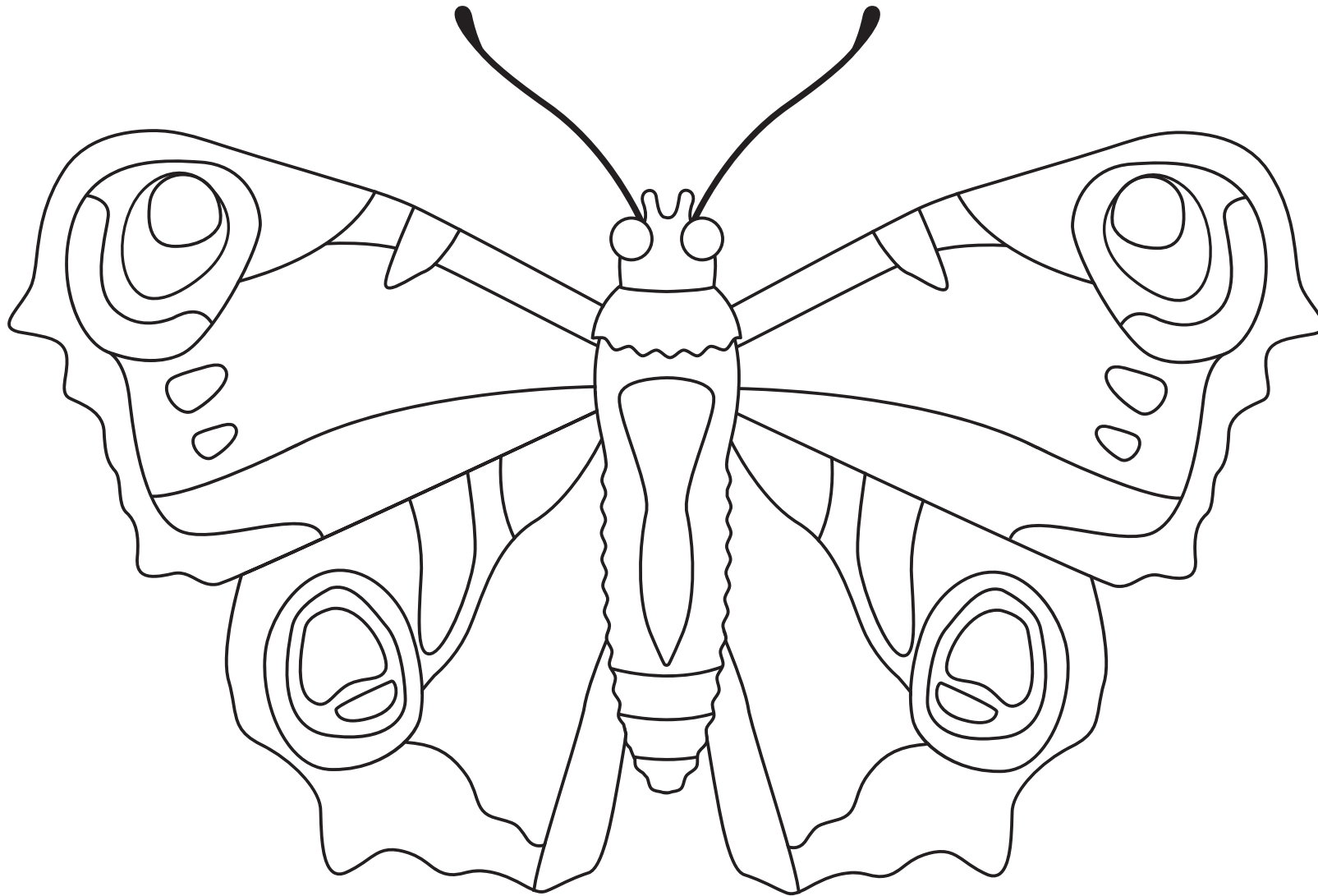


**Red Admiral** Butterfly by .....

[ywt.org.uk](http://ywt.org.uk)



**Yorkshire**  
Wildlife Trust



**Peacock** Butterfly by .....

[ywt.org.uk](http://ywt.org.uk)

# Where to hide your wildlife treasures

Here are our suggestions for where to hide your wildlife treasures - whether you're inside or outside or a bit of both. The suggestions mostly mimic where you're likely to find that kind of creature in the wild! Remember, your wildlife treasure hunt should end with the butterfly!

## Herald Moth

**Inside:** on a lamp or lampshade

**Outside:** somewhere dark and above the ground, like under a window sill

## Ladybird

**Inside:** on a potted plant or pinned/stuck edge of a curtain

**Outside:** on a large leaf or flower or sitting on an outside window sill

## Bumblebee

**Inside:** on flowers or by pictures of flowers or plants, or placed on something brightly coloured, like a cushion

**Outside:** practically anywhere you like, but on a flower is best

## House sparrow

**Inside:** nestled among a house plant, peeking out of a cupboard or bookshelf (anything that represents a tree)

**Outside:** in or amongst a hedge or tree, or perhaps on a birdfeeder

## Hedgehog

**Inside:** somewhere dark and warm, like a cupboard, or under the stairs or bed

**Outside:** somewhere dark and sheltered - nestled underneath something

## Great tit

**Inside:** on top of a house plant, a high cupboard or bookshelf (anything that could represent a tree)

**Outside:** in or amongst a leafy plant, bush or tree, or perhaps on a birdfeeder

## Worm

**Inside:** in the pot of a houseplant, in the compost bin...

**Outside:** on the lawn, on soil, under a pot, in your compost or on the path near some grass

## House martin

**Inside:** on the edge or top of a window frame or mirror

**Outside:** under the 'eaves' of somewhere in reach, like a shed

## Frog

**Inside:** in the bath or shower, in or under a sink

**Outside:** near some water - a pond or a water butt, or fill a bowl with water to pop outside

## Ground beetle

**Inside:** under something - a shoe, a pot plant, sticking out from under a cupboard or bookshelf, or in any nook or cranny

**Outside:** under a rock or sticking out from under a planter or a big pot, under a doormat by the door

## Pipistrelle bat

**Inside:** on top of a wardrobe or curtain rail, or hang down from somewhere on a piece of string

**Outside:** high on the side of your house or shed, under a window sill, or under the eaves

## Blackbird

**Inside:** next to a house plant or something else that's green

**Outside:** in or amongst a hedge, on the lawn or perhaps on a birdfeeder

## Butterfly - remember to end with this wildlife treasure

**Inside and outside:** on a window facing your street. Take a photo and share it with us on social media using the hashtag #WaveOfButterflies



@YorkshireWildlifeTrust



@YorksWildlife



@yorkshiewildlifetrust\_

